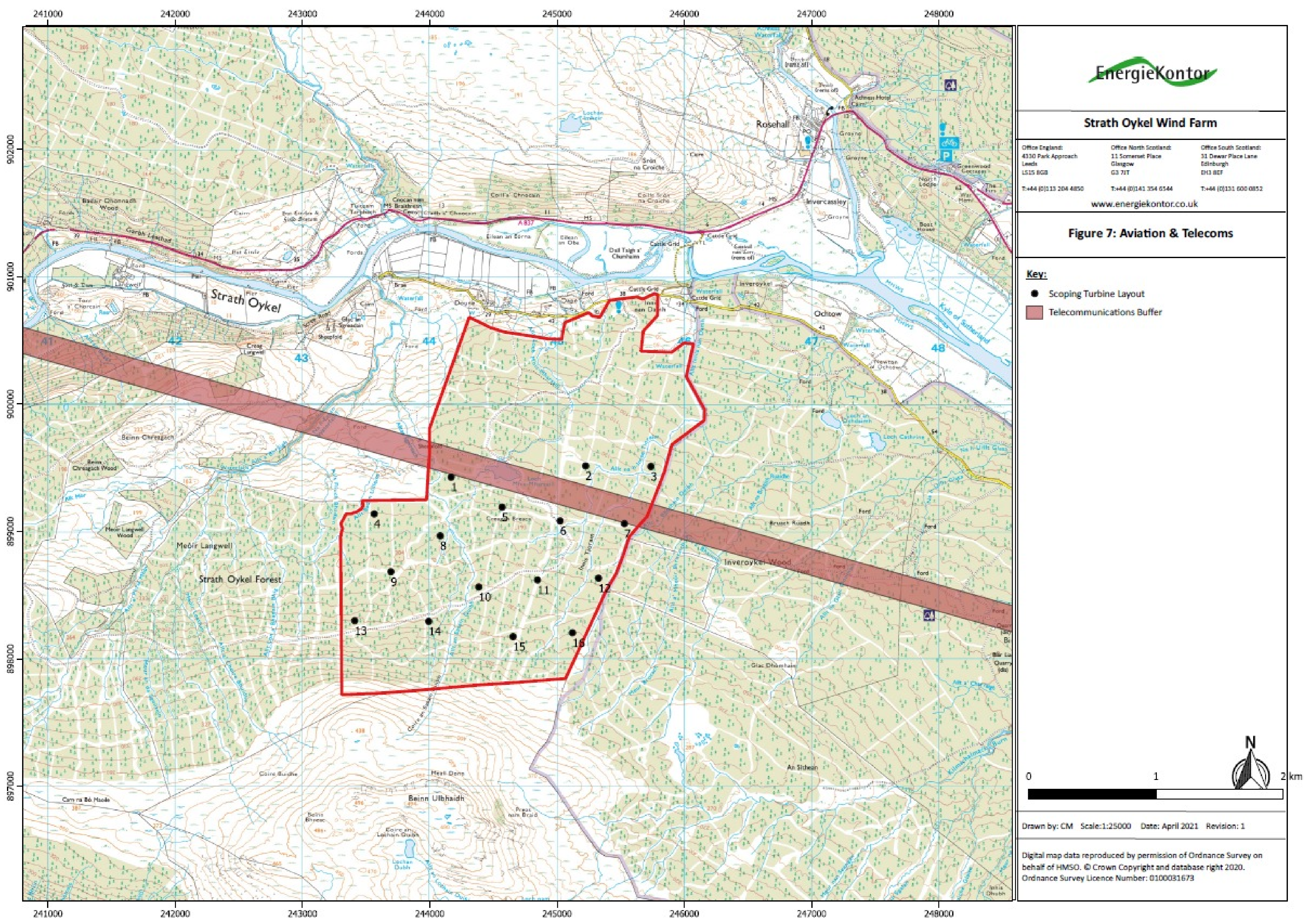


Why Strath Oykel Wind Farm

TECHNICAL CONSTRAINTS

Careful consideration must be given to ensure that any wind farm proposal does not unacceptably affect technical assets surrounding the Site. An initial step with site identification is to understand if there are any technical constraints which may be impacted, for example:

- Telecommunications and Radar;
- Aviation;
- Distribution and Transmission Infrastructure
- Transportation Infrastructure



We consider that Strath Oykel is in a suitable location in terms of aviation constraints. The project is situated a considerable distance from significant aviation facilities, circa 60 km northwest of Inverness Airport and 75 km northwest of RAF Lossiemouth. The Site is approximately 2 km from the eastern boundary of Tactical Training Area 14 and the Highlands Restricted Area (R610A). The Proposed Development will not affect any other aviation interests, including MOD radar, civil airports or NATS communications.