

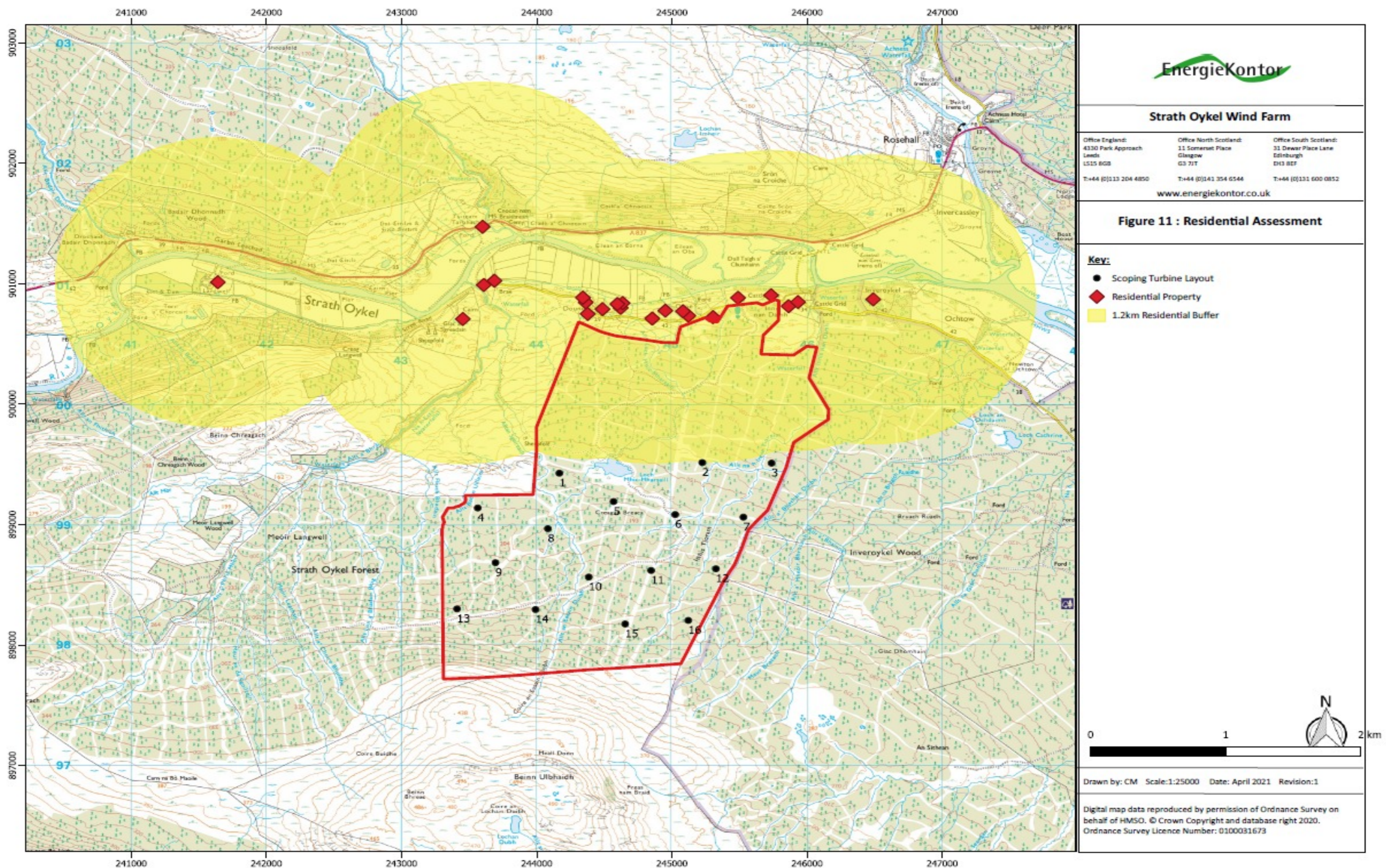
Visual Assessment

DOES THIS AFFECT YOU?

There are various considerations for local properties when looking at a proposed development:

- Visual effects
- Noise
- Shadow Flicker

We will engage with all local residents and ensure that everyone is taken into consideration. As such, if you are a local resident please do speak to the team so we can understand and explain your relationship to the site. This will provide useful information to help inform the site layout.



VISUAL EFFECTS

The planning application for the Proposed Development will undertake residential amenity assessments when significant visual effects are identified within 1.2km as part of the design and environmental assessment process to minimise potential adverse effects on local properties.

NOISE

There are strict guidelines on wind turbines and noise emissions to ensure the protection of residential amenity. Modern turbines are much quieter with the main sound being the aerodynamic swoosh of the blades. It is possible to stand underneath a turbine and hold a conversation without having to raise your voice. As part of the process we will be carrying out noise assessments that will cover wind speeds and neighbouring mining operations to ensure the Proposed Development does not create any unsatisfactory noise on local properties.

SHADOW FLICKER

Once the final position of the turbines is known, the potential for shadow flicker to occur at residential properties can be assessed as part of the environmental assessment process. Shadow flicker is usually not considered to be an issue beyond 10 rotor diameters. A planning condition will be applied to the development that shadow flicker shall be minimised from the Proposed Development.